

✦ CZ AND CZP ARE HIGH PURITY CHEMICAL ZIRCONIA POWDERS OFFERING A BROAD RANGE OF ACHIEVABLE SIZE

CZ and CZP grades are derived from zirconium oxychloride. CZP grades are preferred for sensitive application due to its chloride level (Cl < 200ppm) compared to CZ powders (Cl < 1000ppm).

Available particle size distribution ranges from 2.5 to 25µm. Other particle size is achievable on request. Please contact us !

📊 TYPICAL PARTICLE SIZE & SPECIFIC SURFACE AREA

	Particle size ^a (µm)			Specific Surface Area ^b (m ² /g)
	D10	D50	D90	
CZ-3	1.0	2.5	<20.0	7.0 – 11.0
CZ-5	1.0	4.5	<20.0	4.0 – 8.0
CZ-25	3.0	25.0	<100.0	3.0 – 7.0
CZP-5	1.0	4.5	<20.0	1.0 – 5.0
CZP-15	1.0	16.5	<100	0.5 – 4.0

^a : Laser diffraction - ^b : B.E.T. measurement

⚙️ MAIN APPLICATIONS

- Thermal barrier coatings (TSP, EBPVD ingot)
- Magnesium-stabilized zirconia ceramics (MgPSZ), a ceramic composed of CZ or CZP powders exhibits a white color
- Foundry filters
- Glass and gemstones
- Polishing slurries
- High intensity pigments for ceramic tile decoration
- Functional filler/additive (polishing slurry, composite, ...)



EB-PVD ingots

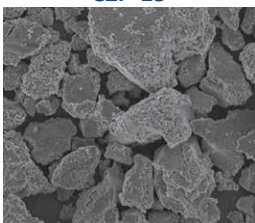
🔬 TYPICAL CHEMICAL ANALYSIS

	Chemistry ^a (ppm)						L.O.I. ^c (wt%)
	SiO ₂	Na ₂ O	Al ₂ O ₃	TiO ₂	Fe ₂ O ₃	Cl ^b	
CZ-3							
CZ-5	<100	<50	<100	<50	<50	<1000	<1.0
CZ-25							
CZP-5	<100	<50	<100	<50	<50	<200	<1.0
CZP-15							

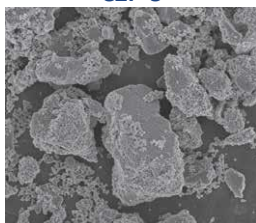
^a : I.C.P. - ^b : Titration method - ^c : Loss weight from 105°C to 1000°C

🔍 CZ AND CZP POWDERS ARE MADE OF AGGREGATES OF VERY FINE ZIRCONIA PARTICLES

CZP-15



CZP-5



📦 PACKAGING

- 25kg cardboard box
- 1MT big-bags

SEPR – SAINT-GOBAIN ZIRPRO
 B.P. 60025 - Batiment L
 539, route de Sorgues
 84131 Le Pontet Cedex - France
 zirpro@saint-gobain.com
 Tél : +33 4 90 32 70 02
 www.zirpro.com