

CZE Zirconias

TECHNICAL DATA SHEET

- Monoclinic zirconia chemical powders made by precipitation of zirconium oxychloride followed by precise calcination and milling.
- Three grades of CZE combining high reactivity and purity are available.
- Ideal choice for high-end applications such as found of electronics or automotive markets.

CHEMICAL ANALYSIS (ppm)

	ZrO ₂ +HfO ₂	SiO ₂	Na ₂ O	TiO ₂	Fe ₂ O ₃	Al ₂ O ₃	Cl
CZE-S1	> 99.9%	<200	<200	<50	<50	<100	<100
CZE-M1	> 99.9%	<200	<200	<50	<50	<100	<200
CZE-G1	> 99.9%	<200	<200	<50	<50	<100	<200

Analytical methods:
 - ICP measurement
 - Titration method for Cl
 - ZrO₂+HfO₂ by difference

PARTICLE SIZE & SPECIFIC SURFACE AREA

	CZE-S1	CZE-M1	CZE-G1
SSA (m ² /g)	4 - 8	14 - 18	23 - 27
D10 (µm)	0.1	0.1	0.1
D50 (µm)	0.4	0.4	0.7
D90 (µm)	<2.0	<2.0	<3.0

Analytical methods:
 - Specific surface area by B.E.T.
 - Particle size distribution by laser diffraction

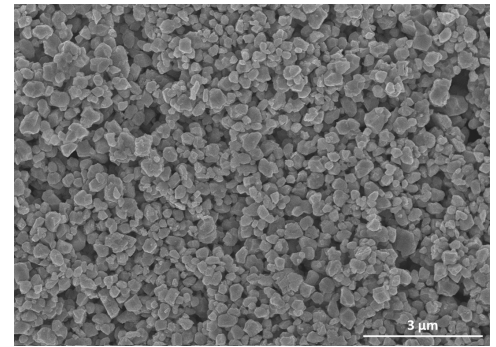
Other particle sizes and SSA can be available upon request.

CRYSTAL STRUCTURE ————— 100% Monoclinic

SAFETY DATA SHEET AVAILABLE

PACKAGING

25 kg plastic drums.



MAIN APPLICATIONS

- Foundry filters
- Electronic ceramics: PZT, MLCC
- Oxygen sensors, fuel cells, OTM
- Structural ceramics: Y-TZP, MgPSZ
- Fillers in composite

Saint-Gobain ZirPro is the expert in zirconia-based materials for industrial applications. From our global network of manufacturing, commercial and research facilities, we serve leading customers through long-term and trust-based relationships.

Saint-Gobain ZirPro (Handan) Co., Ltd.
 N°8 Century Street
 Economic Development Zone
 056107 Handan - Hebei
 China

Tel.: +86 31 08 06 60 02
 Fax: +86 31 08 06 60 25

SEPR Saint-Gobain ZirPro
 B.P. 60025 - 84131 Le Pontet Cedex
 France

Tel.: +33 (0)4 90 32 70 71
 Fax: +33 (0)4 90 32 70 61
 e-mail: zirpro@saint-gobain.com

<http://www.zirpro.com>

