

CZ/CZP Zirconias

TECHNICAL DATA SHEET

- CZ and CZP are monoclinic chemical zirconia powders derived from zirconium oxychloride.
- Composed of aggregates of very fine zirconia particles ranging from 2.5 to 25µm.
- CZP are preferred for sensitive applications due to its lower chlorine content (Cl<200ppm) compared to CZ powders (Cl < 200ppm).

CHEMICAL ANALYSIS (ppm)

	ZrO ₂ +HfO ₂	SiO ₂	Na ₂ O	TiO ₂	Fe ₂ O ₃	Al ₂ O ₃	Cl
CZ	> 99.9%	<100	<50	<50	<50	<100	<1000
CZP	> 99.9%	<100	<50	<50	<50	<100	<200

Analytical methods:
 - ICP measurement
 - Titration method for Cl
 - ZrO₂+HfO₂ by difference

PARTICLE SIZE & SPECIFIC SURFACE AREA

	CZ-3	CZ-5	CZ-25	CZP-5	CZP-15
D90 (µm)	<20.0	<20.0	<200	<20.0	<100
D50 (µm)	2.5	4.5	25.0	4.5	15.0
D10 (µm)	1.0	1.0	3.0	1.0	1.0
SSA (m ² /g)	6.0 - 10.0	4.0 - 8.0	3.0 - 7.0	1.0 - 5.0	0.5-4.0

Analytical methods:
 - Specific surface area by B.E.T.
 - Particle size distribution by laser diffraction

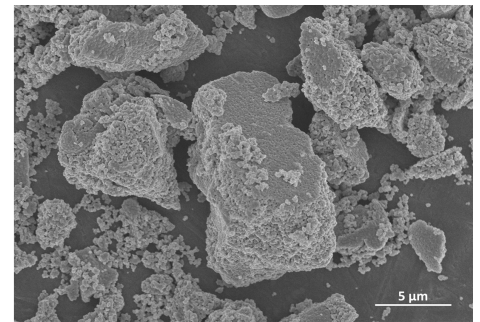
Other particle sizes and SSA are achievable in request. Please contact us.

CRYSTAL STRUCTURE _____ 100% Monoclinic

SAFETY DATA SHEET AVAILABLE

PACKAGING

25 kg plastic drums
 1MT big-bags



MAIN APPLICATIONS

- Thermal barrier coatings
- Structural ceramics (white MgPSZ)
- Foundry filters
- High intensity pigments
- Fillers in composite

Saint-Gobain ZirPro is the expert in zirconia-based materials for industrial applications. From our global network of manufacturing, commercial and research facilities, we serve leading customers through long-term and trust-based relationships.

Saint-Gobain ZirPro (Handan) Co., Ltd.
 N°8 Century Street
 Economic Development Zone
 056107 Handan - Hebei
 China

Tel.: +86 31 08 06 60 02
 Fax: +86 31 08 06 60 25

SEPR Saint-Gobain ZirPro
 B.P. 60025 - 84131 Le Pontet Cedex
 France

Tel.: +33 (0)4 90 32 70 71
 Fax: +33 (0)4 90 32 70 61
 e-mail: zirpro@saint-gobain.com

<http://www.zirpro.com>

